



**ROOSEVELT ISLAND OPERATING CORP
PUBLIC SAFETY DEPARTMENT**



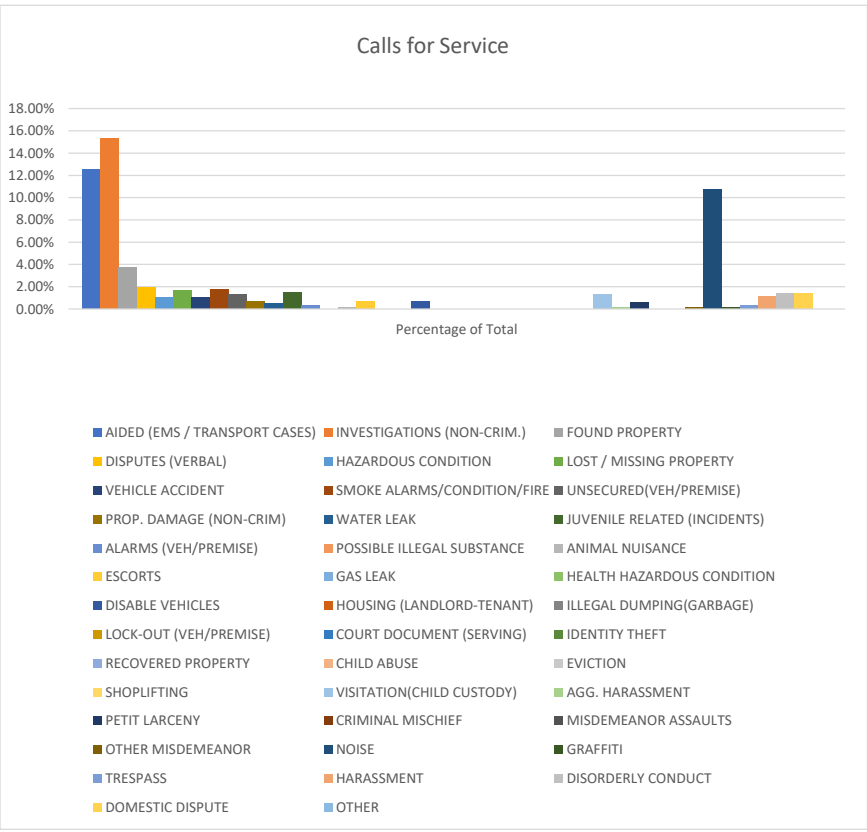
**CALL FOR SERVICE REPORT
MARCH 2026**

March Calls for Services Summary

Top 3 Call Trends for March

1. INVESTIGATION (NON-CRIMINAL)
2. AIDED
3. FOUND PROPERTY

Overall March Calls for Service is 433





ROOSEVELT ISLAND OPERATING CORP PUBLIC SAFETY DEPARTMENT



CRIME REPORT- MARCH 2026

Type of Incident	Classification	Count This Month				Year to Date			Year 2025 Totals	Percentage Change
		Arrests	Non- Arrests	Total	Locations	Arrests	Non- Arrests	Total		
GRAND LARCENY	Index Crimes	0	0	0	N/A	0	1	1	0	0.00%
GR. LARCENY AUTO	Index Crimes	0	0	0	N/A	0	0	0	0	0.00%
ASSAULT	Index Crimes	0	3	3	P-1, P-2, P-7	0	5	5	7	0.00%
BURGLARY	Index Crimes	0	0	0	N/A	0	0	0	1	0.00%
ROBBERY	Index Crimes	0	0	0	N/A	0	0	0	0	0.00%
RAPE	Index Crimes	0	0	0	N/A	0	0	0	0	0.00%
MURDER	Index Crimes	0	0	0	N/A	0	0	0	0	0.00%
TOTAL		0	3	3		0	6	6	8	-25.00%

Type of Incident	Classification	Count This Month				Year to Date			Year 2025 Totals	Percentage Change
		Arrests	Non- Arrests	Total	Locations	Arrests	Non- Arrests	Total		
AGG. HARASSMENT	Misdemeanors	0	1	1	540	0	2	2	0	0.00%
PETIT LARCENY	Misdemeanors	0	7	7	P-7(7)	0	14	14	18	-22.22%
CRIMINAL MISCHIEF	Misdemeanors	0	0	0	N/A	0	0	0	3	-100.00%
MISDEMEANOR ASSAULTS	Misdemeanors	0	0	0	N/A	0	0	0	0	0.00%
OTHER MISDEMEANOR	Misdemeanors	0	1	1	P-7(OA)	1	1	2	2	0.00%
TOTAL		0	9	9		1	17	18	23	-21.74%

Type of Incident	Classification	Count This Month				Year to Date			Year 2025 Totals	Percentage Change
		Arrests	Non- Arrests	Total	Locations	Arrests	Non- Arrests	Total		
NOISE	Violations- Non Crimes	0	49	49	460, 510(3), 516, 540(6), 546(7), 560, 580(9), 625, P-2, P-5(2), P-	0	179	179	59	203.39%
GRAFFITI	Violations- Non Crimes	0	2	2	P-10, P-13	1	3	4	0	0.00%
TRESPASS	Violations- Non Crimes	2	0	2	P-6(A), P-10(A)	3	3	6	6	-50.00%
HARASSMENT	Violations- Non Crimes	0	16	16	460(2), 546(3), 580, P-2, P-4(5), P- 5(OA), P-6(2), P-7	0	30	30	27	11.11%
DISORDERLY CONDUCT	Violations- Non Crimes	3	4	0	516, P-2(A), P-4, P-4(A), P-6(2), P-7(A)	4	20	24	4	500.00%
DOMESTIC DISPUTE	Violations- Non Crimes	0	8	8	460(2), 546(OA), P-6, P-7(OA) P- 11, P-12(2)	1	24	25	26	-3.85%
OTHER	Violations- Non Crimes	0	7	7	P-2(2), P-4, P-7(4)	1	26	27	18	50.00%
TOTAL		5	86	84	N/A	10	285	295	140	110.71%

Type of Incident	Classification	Count This Month	Year to Date	Year 2025 Totals	Percentage Change
"A" PARKING VIOLATIONS	Parking Violations	641	1025	1074	-4.56%
"B" TRAFFIC VIOLATIONS	Traffic Violations	52	146	91	60.44%
TOTAL		693	1171	1165	0.52%



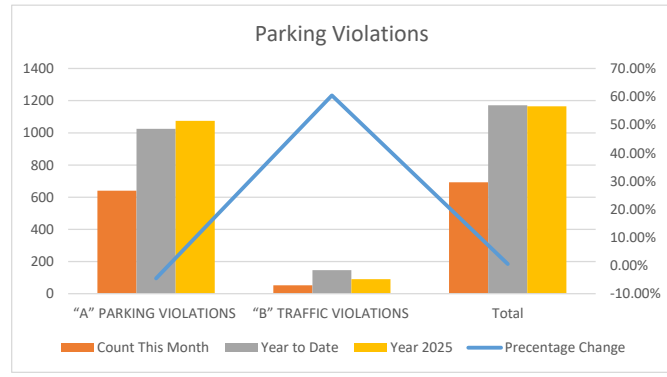
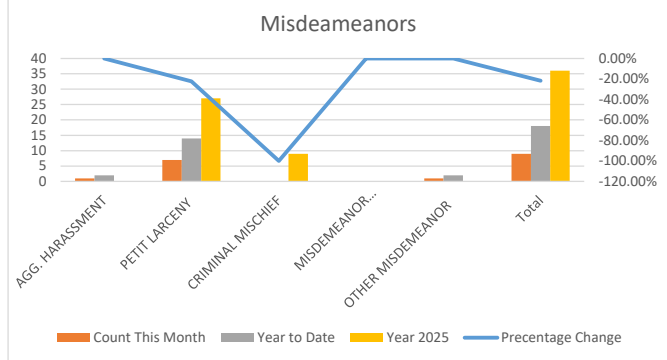
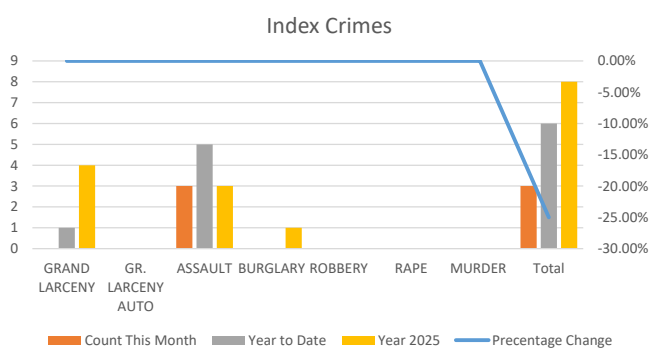
Roosevelt Island Operating Corp
Public Safety Department



CRIME TREND ANALYSIS- MARCH 2026

March 2026 Crime Trend Analysis

Index Crimes	
<u>Trending Up</u>	ASSAULT
<u>Trending Down</u>	N/A
Misdemeanors	
<u>Trending Up</u>	PETIT LARCENY
<u>Trending Down</u>	N/A
Violations- Non Crimes	
<u>Trending Up</u>	HARASSMENT
<u>Trending Down</u>	NOISE
Parking Violations Total	641
Traffic Violations Total	52





**ROOSEVELT ISLAND OPERATING CORP
PUBLIC SAFETY DEPARTMENT**



**REPORT: APRIL 2026
CALLS FOR SERVICES / RESPONSES**

TYPE OF INCIDENT	JAN	FEB	MAR	APR	MAY	JUN	JUL	AUG	SEPT	OCT	NOV	DEC	YTD	Percentage of Total
AIDED (EMS / TRANSPORT CASES)		79	72	73	93								317	10.00%
INVESTIGATIONS (NON-CRIM.)		99	86	102	106								393	12.25%
FOUND PROPERTY		20	25	49	53								147	2.98%
DISPUTES (VERBAL)		13	10	16	13								52	1.52%
HAZARDOUS CONDITION		4	8	5	6								23	0.79%
LOST / MISSING PROPERTY		10	10	10	11								41	1.32%
VEHICLE ACCIDENT		6	7	6	4								23	0.86%
SMOKE ALARMS/CONDITION/FIRE		6	15	16	16								53	1.39%
UNSECURED(VEH/PREMISE)		4	12	8	15								39	1.06%
PROP. DAMAGE (NON-CRIM)		4	4	3	2								13	0.53%
WATER LEAK		1	5	6	6								18	0.40%
JUVENILE RELATED (INCIDENTS)		9	9	7	14								39	1.19%
ALARMS (VEH/PREMISE)		1	3	0	2								6	0.26%
POSSIBLE ILLEGAL SUBSTANCE		0	0	0	0								0	0.00%
ANIMAL NUISANCE		1	0	6	4								11	0.07%
ESCORTS		5	3	4	4								16	0.53%
GAS LEAK		2	7	1	4								14	0.00%
HEALTH HAZARDOUS CONDITION		0	0	0	0								0	0.00%
DISABLE VEHICLES		3	5	0	0								8	0.53%
HOUSING (LANDLORD-TENANT)		0	0	0	0								0	0.00%
ILLEGAL DUMPING(GARBAGE)		0	0	0	1								1	0.00%
LOCK-OUT (VEH/PREMISE)		0	0	0	0								0	0.00%
COURT DOCUMENT (SERVING)		0	0	0	0								0	0.00%
IDENTITY THEFT		0	0	0	0								0	0.00%
RECOVERED PROPERTY		0	0	0	1								1	0.00%
CHILD ABUSE		0	0	0	0								0	0.00%
EVICION		0	0	0	0								0	0.00%
SHOPLIFTING		0	0	0	0								0	0.00%
VISITATION(CHILD CUSTODY)		4	12	21	29								66	1.06%
AGG. HARASSMENT				1	0								1	0.00%
PETIT LARCENY				7	26								33	0.00%
CRIMINAL MISCHIEF				0	0								0	0.00%
MISDEMEANOR ASSAULTS				0	0								0	0.00%
OTHER MISDEMEANOR				1	0								1	0.00%
NOISE				49	46								95	0.00%
GRAFFITI				2	1								3	0.00%
TRESPASS				2	16								18	0.00%
HARASSMENT				16	10								26	0.00%
DISORDERLY CONDUCT				7	8								15	0.00%
DOMESTIC DISPUTE				8	10								18	0.00%
OTHER				7	12								19	0.00%
TOTALS		271	293	433	513	0	0	0	0	0	0	0	1510	



**ROOSEVELT ISLAND OPERATING CORP
PUBLIC SAFETY DEPARTMENT**



**CALL FOR SERVICE REPORT
April 2026**

April Calls for Services Summary
Top 3 Call Trends for April

1. INVESTIGATION NON-CRIM
2. AIDED
3. FOUND PROPERTY

Overall April Calls for Service is 513





ROOSEVELT ISLAND OPERATING CORP PUBLIC SAFETY DEPARTMENT



CRIME REPORT- APRIL 2026

Type of Incident	Classification	Count This Month			Locations	Year to Date			Year 2025 Totals	Percentage Change
		Arrests	Non-Arrests	Total		Arrests	Non-Arrests	Total		
GRAND LARCENY	Index Crimes	0	0	0	N/A	0	1	1	0	0.00%
GR. LARCENY AUTO	Index Crimes	0	0	0	N/A	0	0	0	0	0.00%
ASSAULT	Index Crimes	1	3	4	460(A), 540, P-6, P-7	1	8	0	10	-10.00%
BURGLARY	Index Crimes	0	0	0	N/A	0	0	0	1	-100.00%
ROBBERY	Index Crimes	0	0	0	N/A	0	0	0	0	0.00%
RAPE	Index Crimes	0	0	0	N/A	0	0	0	0	0.00%
MURDER	Index Crimes	0	0	0	N/A	0	0	0	0	0.00%
SEXUAL ASSAULT	Index Crimes	0	0	0	N/A	0	0	0	1	-100.00%
TOTAL		1	3	4		1	9	1	12	-16.67%

Type of Incident	Classification	Count This Month			Locations	Year to Date			Year 2025 Totals	Percentage Change
		Arrests	Non-Arrests	Total		Arrests	Non-Arrests	Total		
AGG. HARASSMENT	Misdemeanors	0	0	0	N/A	0	2	2	1	100.00%
PETIT LARCENY	Misdemeanors	1	25	26	P-1, P-7(A), P-7(24)	1	39	40	25	60.00%
CRIMINAL MISCHIEF MISDEMEANOR	Misdemeanors	0	0	0	N/A	0	0	0	3	-100.00%
ASSAULTS	Misdemeanors	0	0	0	N/A	0	0	0	0	0.00%
OTHER MISDEMEANOR	Misdemeanors	0	0	0	N/A	1	1	2	2	0.00%
TOTAL		1	25	26		2	42	44	31	41.94%

Type of Incident	Classification	Count This Month			Locations	Year to Date			Year 2025 Totals	Percentage Change
		Arrests	Non-Arrests	Total		Arrests	Non-Arrests	Total		
NOISE	Violations- Non Crimes	0	46	46	460,510(3),540(3),560,580,P-2(2),P-3,P-4,P-5,P-6(16),P-7(2),P-11(2),P-12(3)	0	225	225	77	192.21%
GRAFFITI	Violations- Non Crimes	0	1	1	P-12	1	4	5	1	400.00%
TRESPASS	Violations- Non Crimes	4	12	16	688(A), P-6(4), P-7(3), P-10(3), P-10(3A), P-12(2)	7	15	22	10	120.00%
HARASSMENT	Violations- Non Crimes	0	10	10	460(2), 546(3), P-6(3), P-7, P-12	0	40	40	34	17.65%
DISORDERLY CONDUCT	Violations- Non Crimes	0	8	8	460, 560, P-2, P-6(2), P-7, P-10, P-12	4	28	32	6	433.33%
DOMESTIC DISPUTE	Violations- Non Crimes	0	10	10	460(3), 540, 546, 560, 580, P-4, P-7, P-11	1	34	35	37	-5.41%
OTHER	Violations- Non Crimes	0	12	12	P-1, P-2(3), P-7(3), P-9, P-10(4)	1	38	39	45	-13.33%
TOTAL		4	99	103		14	384	398	210	89.52%

Type of Incident	Classification	Count This Month	Year to Date	Year 2025 Totals	Percentage Change
"A" PARKING VIOLATIONS	Parking Violations	797	1822	1596	14.16%
"B" TRAFFIC VIOLATIONS	Traffic Violations	63	209	30	596.67%
TOTAL		860	2031	1626	24.91%



Roosevelt Island Operating Corp
Public Safety Department



CRIME TREND ANALYSIS- APRIL 2026

April 2026 Crime Trend Analysis

Index Crimes	<u>Trending Up</u>	ASSAULT
	<u>Trending Down</u>	N/A
Misdemeanors	<u>Trending Up</u>	PETIT LARCENY
	<u>Trending Down</u>	AGG. HARASSMENT
Violations- Non Crimes	<u>Trending Up</u>	Trespass
	<u>Trending Down</u>	HARASSMENT
Parking Violations Total		797
Traffic Violations Total		63

